



E16, Rapport du Jury European Suisse / E16, Jury report European Switzerland

**Lauréats et mentionnés
Winners and runner-ups**

Carouge - Fontenette
La réinvention d'un territoire par la nature
Reinventing a territory with nature

et

Biel/Bienne
Vie nouvelle dans un quartier existant
New life in an existing neighbourhood

Organisateur

Association European Suisse

Avec la participation de:

- > L'Office de l'urbanisme de l'Etat de Genève
- > La Ville de Carouge
- > La Ville de Bienne
- > Les représentants des coopératives de Bienne

Coordination et mise en œuvre de la procédure

Association European Suisse
Rue de l'Allée 11
2503 Biel/Bienne
Suisse

Jürg Bart
Barbara Stettler
Yony Santos
bureau@european.swiss

Organised by

European Switzerland Association

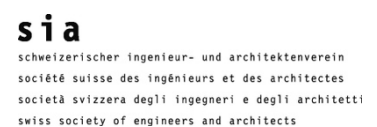
With the participation of:

- > Urban Planning Office of the State of Geneva
- > Municipality of Carouge
- > Municipality of Bienne
- > Representatives of Bienne cooperatives

Coordination and implementation of the procedure

Association European Suisse
Rue de l'Allée 11
2503 Biel/Bienne
Switzerland

Jürg Bart
Barbara Stettler
Yony Santos
bureau@european.swiss



Participants primés pour le site de Bienne:

Lauréats :

OH634 - The city as a living organism

Authors

- > Charlélie Michel (FR), architect urbanist
- > Gaetan Amossé (FR), artist
- > Soukaina Laabida (MA), architect

et

YH526 - My House

Authors

- > Morten Hansen (DK), architect
- > Christopher Galliano (DK), architect
- > Casper Juhler-Olsen (DK), architect

Participants primés pour le site de Carouge

Lauréat :

OT018 - AU FIL DE L'OR / GOLD LINE

Authors

- > Marc de Tassigny (CH), architect
- > Leonhard Kanapin (CH), architect
- > Félix Brüssow (DE), landscape engineer
- > Nicolas Waechter (FR), urban planner
- > Kim Pittier (CH), architect
- > Stefania Malangone (CH), architect
- > Oriane Martin (CH), geographer

Mentionnés:

CQ020 - Cultivating Synergies

Authors

- > Lili Szabo (FR), architect
- > Steve Hardy (FR), architect

Collaborators :

- > Dimitri Szabo (FR), agronomist

et

IM116 - XL.X.M.S. Regenerating Carouge grounds

Authors

- > Philipp Urech (CH), architect
- > Antoine Vialle (FR), architect
- > Yannick Poyat (FR), agronomy-landscape engineer

Winning participants for the Bienne site:

Winners:

OH634 - The city as a living organism

Authors

- > Charlélie Michel (FR), architect and urbanist
- > Gaetan Amossé (FR), artist
- > Soukaina Laabida (MA), architect

and

YH526 - My House

Authors

- > Morten Hansen (DK), architect
- > Christopher Galliano (DK), architect
- > Casper Juhler-Olsen (DK), architect

Winning participants for the Carouge site

Winner:

OT018 - AU FIL DE L'OR / GOLD LINE

Authors

- > Marc de Tassigny (CH), architect
- > Leonhard Kanapin (CH), architect
- > Félix Brüssow (DE), landscape engineer
- > Nicolas Waechter (FR), urban planner
- > Kim Pittier (CH), architect
- > Stefania Malangone (CH), architect
- > Oriane Martin (CH), geographer

Runners-up:

CQ020 - Cultivating Synergies

Authors

- > Lili Szabo (FR), architect
- > Steve Hardy (FR), architect

Collaborators :

- > Dimitri Szabo (FR), agronomist

and

IM116 - XL.X.M.S. Regenerating Carouge grounds

Authors

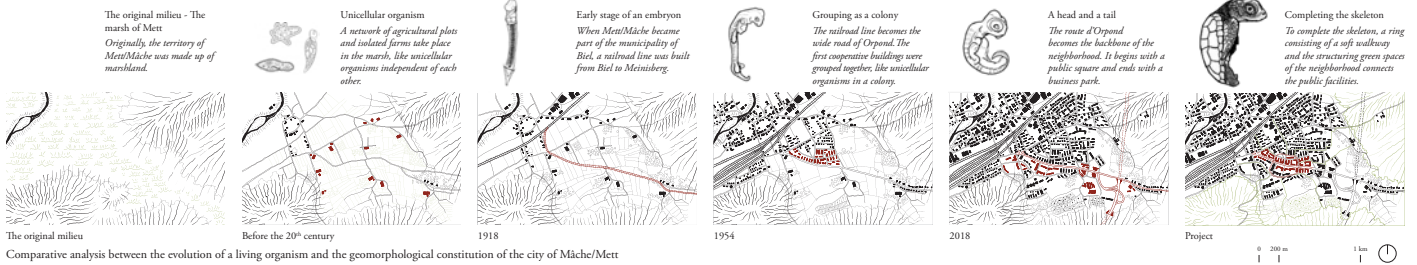
- > Philipp Urech (CH), architect
- > Antoine Vialle (FR), architect
- > Yannick Poyat (FR), agronomis-landscape engineer

Considering the city as a living organism | Considérer la ville en tant qu'organisme vivant

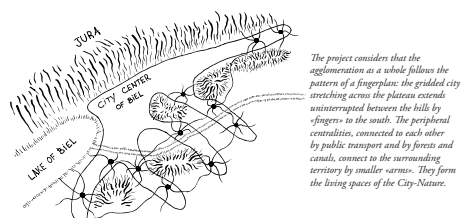
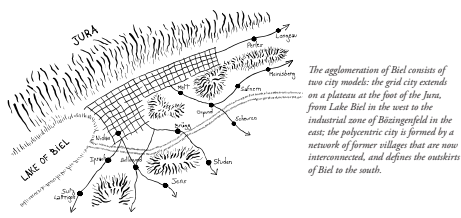
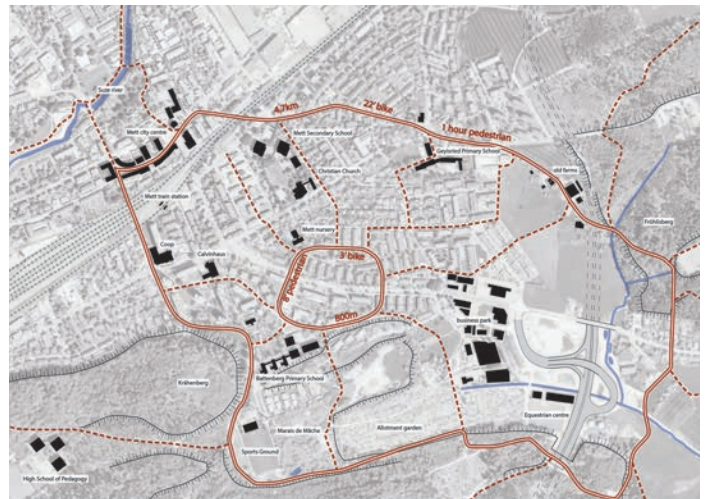
Why is it important to talk about the «living city» nowadays?
History has shown that, depending on the model used to make the city, it is possible to produce a living city or an inert city; a city that connects or a city that fractures; an inclusive city that brings together all generations and social classes, or a city that produces exclusion and isolation.
The city of tomorrow, a natural and inclusive city, inspired by the living.
If the inert city is organized around the machine, we decided to take the opposite approach and analyze what naturally comes into motion: the living organism. To do this, we compared the evolution of the Geysried district to the evolution of a living organism. By observing what is already there, we tried to identify characteristics of the Geysried district that are analogous to the characteristics of a living organism.

«A living organism is a complex, organized living system. It is expressed by the interdependence between a structure (for example a skeleton), vital functions, and a belonging to a milieu, in which it draws the necessary resources for its subsistence.»
Intervening on the living organism
Intervening on the city by considering it as a living organism implies observing its urban structure as one observes the functioning of an organism, in order to understand its structuring and to respond specifically to its evolutionary challenges in its environment. The intervention involves 3 major steps:
Observing includes documenting the history of the neighborhood, understanding its identity, identifying its latent resources.

Analyzing includes identifying the qualities and potentials, as well as the dysfunctions, in relation to the observations made previously.
Complementing by working with the existing, in order to structure the existing, to fluidify the connections between the different functions, to activate the latent resources, to palliate the identified dysfunctions, and to end up with a figure on which new vital functions can be hung.

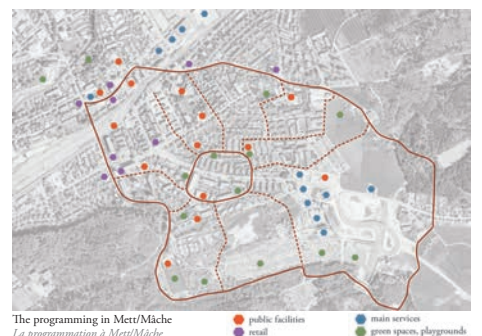


The Geysried neighborhood in its milieu | Le quartier Geysried dans son milieu

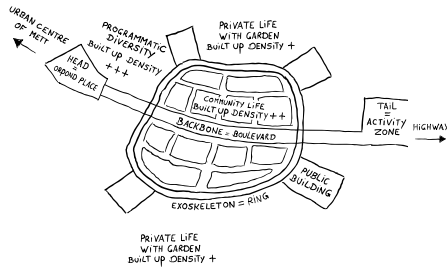


As it stands, the Geysried neighborhood could be compared to a fetus in its last stage of embryogenesis, before it «comes into the world». With the establishment of the ring and the completion of the skeleton, the Geysried neighborhood would complete its gestation. From then on, the neighborhood would evolve in an eminently contextual way, and would form a new milieu through the synergy with the amenities of its local territory: The ring would connect, through a figure clearly identifiable by its form, its materiality and its accessibility, large axes radiating towards different active or latent resources. These great axes would be as many streams flowing in

both directions between a great diversity of environments: from the biotope of the Mett marsh, the allotment gardens, the equestrian center, the natural monument of Heidenstein, etc., to the ring, and from the ring to these different environments. The milieu of Geysried and the surrounding environments could then reciprocally take advantage of their specificity, being able to give place to a city in movement, place of programmatic hybridizations, born from the meeting between several imaginaries.



Unification of the neighbourhood's skeleton | Unification du squelette du quartier



A skeleton organizes the urban structure of the neighborhood
 Un squelette organise la structure urbaine du quartier

Built morphology
 Morphologie bâtie

Urban structure and open spaces
 Structure urbaine et espaces ouverts



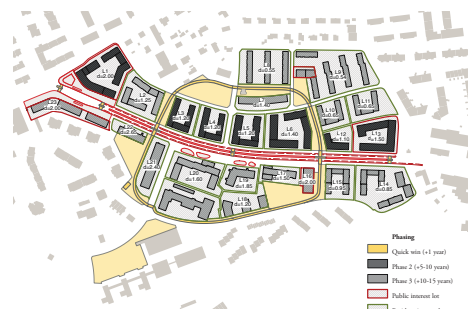
Situation plan
 Plan de situation



Mobility's concept
 Concept de mobilité



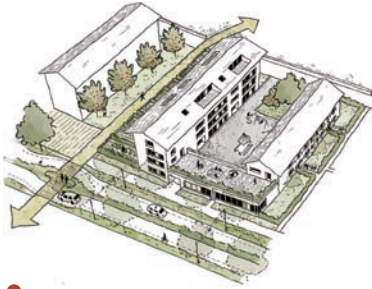
Programming
 Programmation



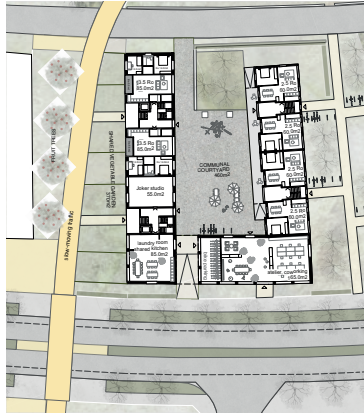
Lot distribution, phasing and density
 Répartition des lots, phasage et densité 1:4000



The ring, support of the development of the neighbourhood's cells | *Le ring, support du développement des cellules du quartier*



1 Cooperative housing on Orpundatase
We start our tour at 37, route d'Orpund. Here you can see the original typologies of the Geystried cooperative housing bars of the 1950s, and how they have evolved through densification as needed.
The common mineral courtyard is the unifying place for the living together of the cell. On both sides of the complex, the vegetable gardens and the vorgearten allow a dialogue with the neighboring cells.
The original bar is renovated to accommodate housing typologies for small households. A new four-story bar replaces the existing one and is intended for young families. A lower extension with common premises, a workshop and a coworking space isolates from the noise of the boulevard and unifies the whole U shape.



2 Family park
Moving on, the family park offers a green, attractive and inclusive space for the residents of the neighborhood. It is located at a maximum of 8 minutes walking distance from all points of the Geystried neighborhood.



3 Bergerie
Your pets are also welcome at Geystried. It is possible to welcome them in a shared paddock in the middle of the town. The neighborhood sheepfold contributes greatly to the liveliness of the neighborhood.

4 Cooperative housing on Safnerweg
The cooperative units at Safnerweg are connected by common courtyards. The units are renovated to offer a typological mix of 1.5 room apartments for singles and students, 2.5 room apartments for small households, and 4.5 and 6.5 room maisonnettes for families and co-locations. A shared workshop completes the U-shape.



« Come, let's make a tour on the ring!
Komm mit für eine Spazierung entlang den Ring!
Faisons un tour le long du ring »



9 School forecourt
Your children will be waiting for you at the end of the school day in the shade of the trees of the brand new square. They will surely want to say hello to the chickens and collect the eggs from the neighborhood chicken coop before going home!



10 Living with a view
The Rue du Midi is ideal for walks and offers a panoramic view of the Jura. It is enhanced by family activities: ping-pong, picnic tables and various games for children.

11 Bus stop Battenberg
Our tour ends at the Battenberg bus stop. You can continue your visit by strolling through the tree-lined alley along the boulevard, and why not pick up your bread and vegetables in the local services.



12 Productive park
For those who like to garden in a collective atmosphere, the productive park is for you. You can garden and at the same time meet your neighbors. Nothing is more pleasant than the visits of the school children who will be happy to garden next to you for their weekly gardening class.



13 Bedevore parking
In this parking building, you can park on three levels. The second floor houses the youth center, including a multipurpose room, music rooms and a bar. A roof terrace offers a magnificent view of the Biel Jura!

My House

My house - My network

In 2050 a home in Geisried rivals the most mundane and attractive houses in the city of Biel/Bienne. The resident's perception of a classical home has changed. Their home extends beyond the walls of a typical apartment, and contains an abundance of high-quality spaces and functions, previously unheard of in cooperative housing.

When you live in an apartment in Geisried, you basically live in a mansion. A typical apartment is more than 250m² in

size, and contains multiple dining rooms, kitchens, living rooms, workshop/hobby spaces, home office, guest quarters and even extraordinary functions such as fitness rooms and spas. However, the rent is steady, and rather declining than rising. All this is possible because the residents have agreed to share certain well-defined functions with their neighbors.

As an added benefit of interacting through sharing, the social life in the

neighborhood is thriving, and the strong community contributes to the areas attractiveness and foster a strong social mobility.

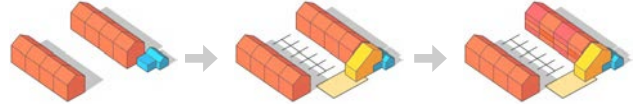
Space for interaction and creativity within the private and semi-private sphere of your home, and the possibility to found and expand a business within attractive semi-public spaces supports growing entrepreneurship and contributes to an ever-extending network, reaching beyond the borders of Geisried.

Overall strategy

01. Add space for extraordinary functions to increase entrepreneurship and foster social interaction. These semi-public spaces tie together the neighborhood and increase the interaction with the rest of the city.

02. Support future increase in density, by adding high quality spaces for shared, semi-private functions. These semi-private functions support daily life, and effectively expands the traditional apt. by an extra 200 m².

03. Increase density by occupying and reorganizing unused / underused space within existing blocks, without reducing the quality of existing outdoor space, and using the minimal amount of resources.



SITEPLAN 1:20000

08.00



My apartment
Spending quality time with the children, Maria enjoys a leisurely morning in her family's newly renovated apartment.

Providing a large selection of apartment layouts, student housing, and shared spaces as well as the refurbishment of the existing buildings has equipped a diverse composition of residents.

10.00



My Gym

Maria and her daughter attend a gymnastic class with local residents. The regular participants have become familiar faces to Maria and her daughter in everyday life and here is a warm and welcoming atmosphere.

Providing the residents with a large selection of conveniences as well as the possibility of connecting the neighborhood to the city has made Geisried a more vibrant and attractive place to live.

12.00



My small business

Maria's husband has opened up a small business in one of the public functions together with a friend. The possibility of doing so adjacent to their home, is one of the reasons why they decided to bring up their family in Geisried.

Providing affordable spaces for small businesses and shops has made foundation for aspiring entrepreneurs.

14.00



My local brewery

Maria meets up with her beer club at the local micro-brewery. Some of the women in the neighborhood started the club a few years ago and it has become increasingly more popular.

Providing space for small businesses, supports the entrepreneurship of the neighborhood, and creates a foundation for large scale extrovert functions.

16.00



My friends house

Maria picks up their dog on the way back. He has been playing all day in his friends' garden and the finds them in the meditation watching TV sessions with some other children.

Providing extended living space for all apartments means that the children have space to play together in groups and at the same time providing a pleasant environment outside the four walls of an apartment.

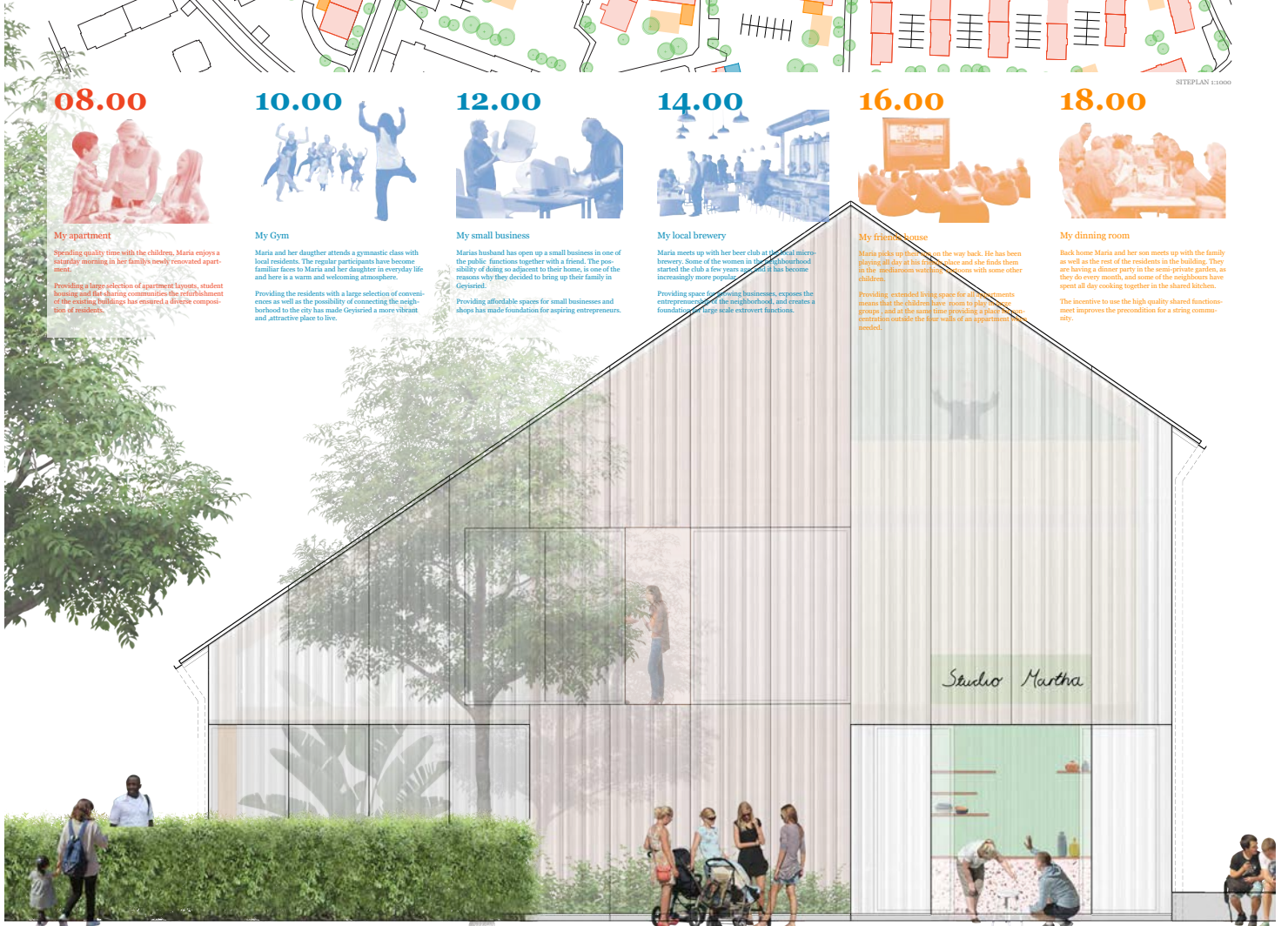
18.00



My dining room

Back home Maria and her son meets up with the family as well as the rest of the residents in the building. They are having a dinner party in the semi-private garden, as they do every month, and some of the neighbors have spent all day cooking together in the shared kitchen.

The incentive to use the high quality shared functions meet improves the precondition for a strong community.



My House

An attractive neighborhood

Geysried 2050 is a persistently attractive neighborhood. By implementing tried and true elements of city-planning, the security and useability of the area is consistently supported.

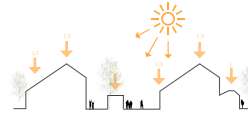
By refurbishing/transforming the existing blocks with high quality materials, that patinate well and require a minimal amount of maintenance, we ensure an aesthetically robust milieu. In this way, the resources of

the housing corporations, and the residents, can be ideally spend on further improving the physical and social atmosphere of the neighborhood.

The traffical patterns of the neighborhood is transformed to better fit future needs and wants. The area will seem lively, without compromising the useability and safety of the residents, and slow traffic is consistently favoured.

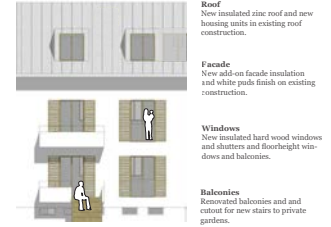
By crafting well defined and manageable outdoor spaces, and supporting more ownership with left-over spaces, the residents will take natural part in maintaining and improving the areas between the buildings.

Introducing more mixed-use, will ensure that the neighborhood is lively all through the day, and the positive surveillance of the users, will induce a heightened sense of security moving around the neighborhood.



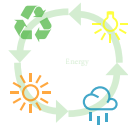
Scale

Renovating the existing buildings instead of replacing them preserves the scale of the area. The extensions made to the post war buildings and to the 1970s housing blocks introduce a new more human scale visually connecting the buildings to the landscape while providing good conditions for life in between the buildings.



Architecture

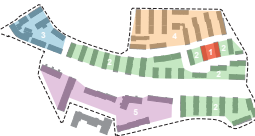
The buildings of the post war era have the potential to meet today's requirements for expression and functionality. Moreover, they have an inherent identity new housing constructions rarely manage to capture. By renovating them this could become more evident. The use of quality materials will ensure them for many years to come.



Sustainability

By renovating instead of replacing the existing buildings, a more sustainable approach is taken to the vision for Geysried 2050. Existing housing blocks is energy renovated with new roofs, facades and windows. New buildings are built in quality materials with attention to longevity, and with sustainable initiatives such as integrated solar panels, collection of rainwater for toilet flushing in new and existing buildings, cold and warm zones in terms of activity. The neighborhood should benefit from local rain harvesting and food production in the gardens.

Pilot Project
Birdseye - 1:2000



Construction phases

The renovation of Geysried is divided into 5 construction phases. Post war era buildings will be renovated first due to wear and tear, uniform floorplans and close proximity to Orpund Strasse.



Noise reduction and Streetscape

Alongside Orpundstrasse the shared community houses and trees will be placed in the gap between existing blocks and will act like a noise reducer for the adjacent courtyards. Further more the community houses will create a new and recognizable streetscape in the same scale and feel of the existing housing.

Traffic, Parking & Mobility

A clear concept for traffic flow must ensure that Geysried becomes an attractive and safe area to move in. Overall, the roads in the area are divided into three categories.

Orpundstrasse (red) will in the future still work as a heavier traffic road, 50km/h, containing heavy traffic, public transport and parking. Four pedestrian crossings (C-green) will appear in the middle of the area next to exteroverted public functions. Two of the crossings will be linked to existing southern paths coming from up hill,

which then will lead north through the area towards the local train station. The surrounding roads (orange) leading from Orpundstrasse and around Geysried will be set to 20 km/h.

The smaller internal roads (blue) will be set to 10km/h to enhance pedestrian and bike movement. The roads will primarily be one-way streets for slow soft traffic, but will also allow 15 min. drop offs for all residents and for electrical and shared cars to park. The rest of the car parking will be situated in new underground parking in left over space on certain points within the area with active functions on top.

My Geysried

The identity of Geysried in 2050 is all about the perception of home. The houses extend well beyond the traditional four walls and merge with the surrounding neighborhood. Providing residents with convenience as well as extraordinary functions in high quality indoor and outdoor spaces, their daily life is as much about the housing block and the neighborhood as the apartment itself.

The residents become part of a series of networks in various scales connecting them not only to the other residents and the neighborhood but to the entire city of Biel. The iconic public community houses will be visible throughout Geysried, connecting the north and south part of the area.



My House

Density and sustainability

Geysried is densified and transformed with a minimal amount of economy, natural resources and outdoor spaces spend. This is to ensure that the quality of existing flats and quality of life of existing residents is heightened rather than compromised.

By carefully analysing the existing blocks, and the outdated/monotone apartment types, a high quantity of unused or underused space is identified. The roof floor is often unused or used

for functions that are easily relocated (i.e., depots etc.), and the monotone apartment types are often too large for the residents, resulting in unused rooms, and disproportional renting costs. By including the unused space, and remodelling the underused space, the full potential of the existing blocks is unleashed, and the desired increase in residents is easily reached.

The roof floor is transformed to desired apartment types, and many blocks are remodelled to offer more

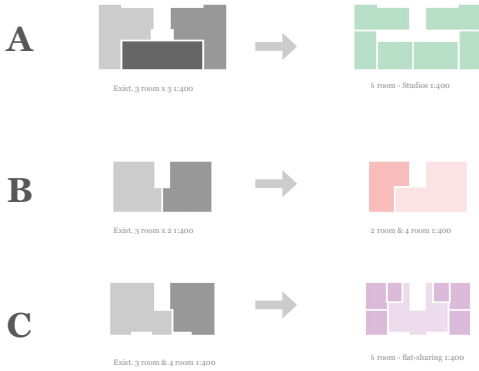
adequate apartment types, at a desired rent. The often technically smaller apartments (1/2 rooms) will effectively be larger than ever before though, by adding semi-private common houses, with high quality shared space for everyday functions.

By sharing spaces/functions that would sit idle in a large apartment most of the time, the residents are not only saving rent, but passively saving a large-scale waste of natural resources and economy.



Possibilities within the existing housing blocks
The housing blocks from the post war era are all possible to transform into attractive and diversified apartments. By focusing on new types and use underused space at the roof levels, the increase in residents by 20% seems obtainable.

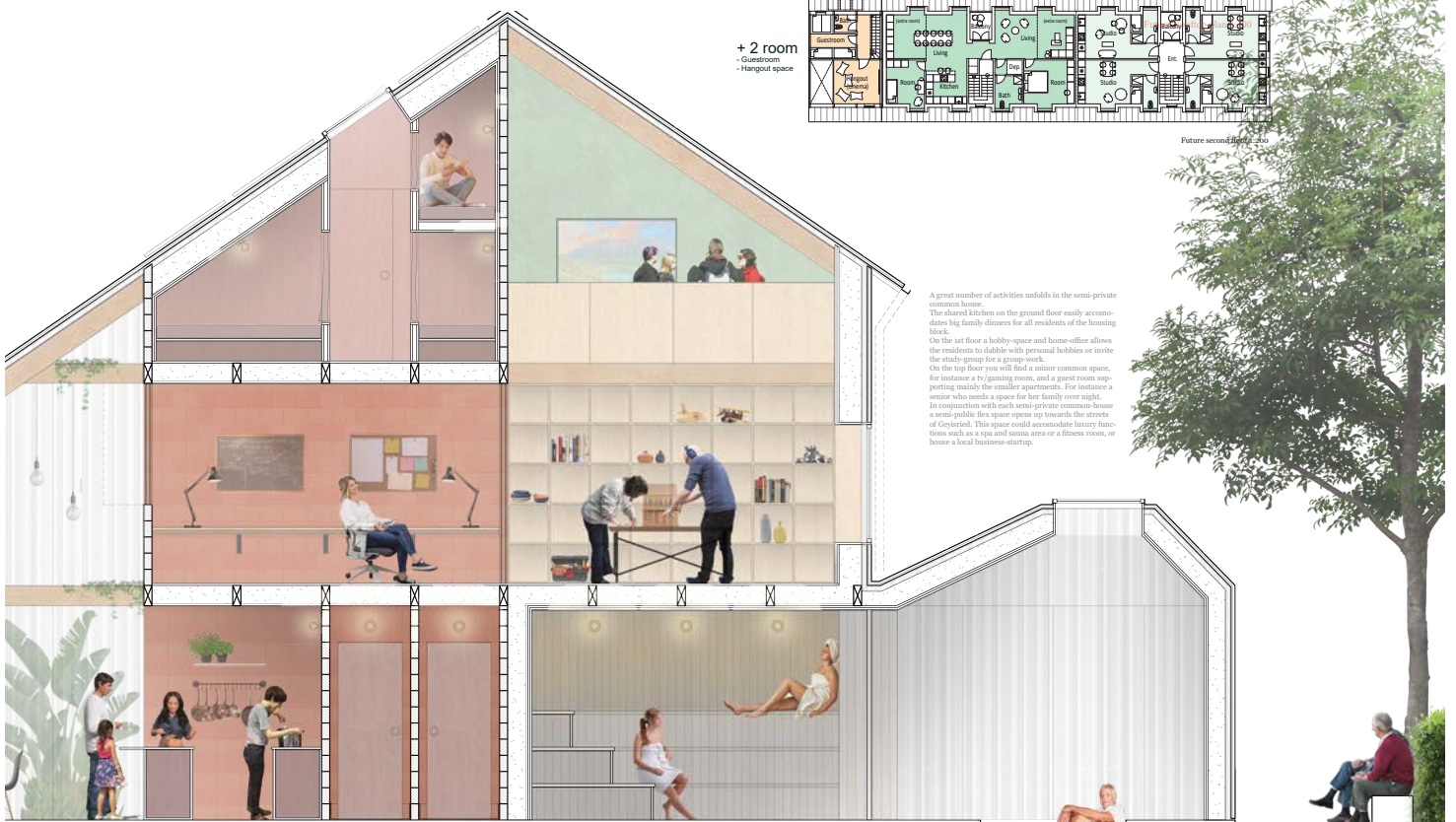
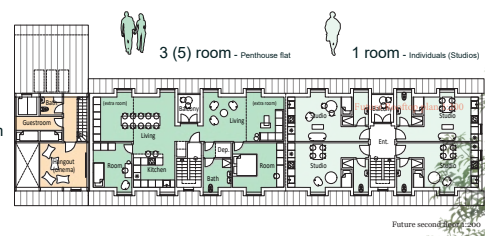
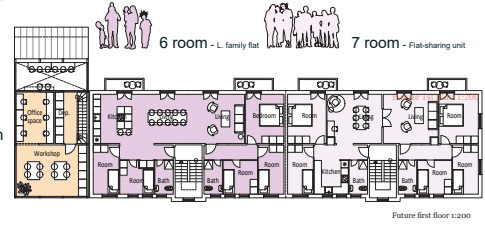
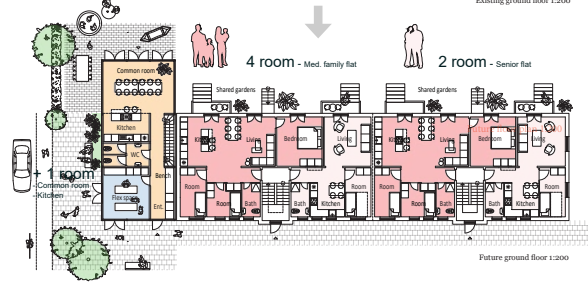
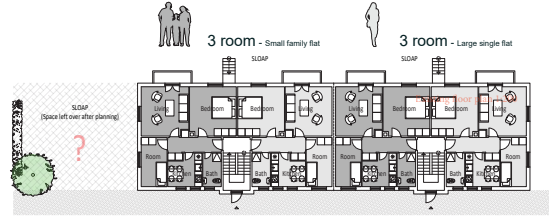
The housing blocks from the 1970's contain a larger variation in apartment types, the interior layout of the apartments can advantageously be updated to more up-to-date conditions in connection with an energy renovation.



Housing mix.

The selection of apartments must ensure a wide variety of residents of all ages and income groups.

Reorganising the floorplans of the existing buildings and activating underused space provides a variety of new apartment types ranging from small studios to large family apartments and pent-houses as well as student housing and flat sharing communities.



A great number of activities unfolds in the semi-private common house. The shared kitchen on the ground floor easily accommodates big family dinners for all residents of the housing block. On the 1st floor a hobby-space and home office allows the residents to do their personal hobbies or invite the study-group for a group-work. On the top floor you will find a minor common space, for instance a tv-gaming room, and a guest room supporting mainly the smaller apartments. For instance a mentor who needs a space for her family over night. In conjunction with each semi-private common-house a semi-public flex space opens up towards the streets of Geysried. This space could accommodate luxury functions such as an spa and sauna area or a fitness room, or house a local business-startup.



Les bains de l'Arve et la ripisylve (végétation spécifique en bord des cours d'eau) / Arve beach and the riparian vegetation

Plan du secteur / Plan of the sector 1: 2000

**Préambule / Preamble**

Le projet « Au fil de l'Or » offre l'opportunité de vivre et d'expérimenter le quartier de la Fontenette et les bords de l'Arve d'une nouvelle manière. Donnant une plus large place aux eaux de l'Arve et à sa ripisylve, ce projet permet de requalifier et de valoriser ce secteur grâce à la nature environnante tout en reconnectant les différents quartiers entre eux. Le secteur accueillera de nouvelles activités, des espaces de loisirs, de détente, de rencontre et de déambulation ainsi qu'un nouveau pôle culturel et artisanal. À travers ces transformations, la Fontenette deviendra un espace liant les humains à la nature comme un nouvel écosystème générant de nouveaux usages et de nouvelles rencontres permettant de faire vivre ce secteur de Carouge à travers sa vitalité métabolique et inclusive.

«Gold Line» offers the opportunity to live and experience the Fontenette district and banks of the Arve in a new way. Giving greater space to the waters of the Arve and its riparian zone, this project requalifies and enhances the sector thanks to the surrounding nature, while reconnecting the different districts within. The sector will host new activities, leisure, relaxation, meeting and walking areas, as well as a new hub for artisanry and craftsmanship. Through these transformations, Fontenette will become a space linking humans to nature: a new ecosystem generating novel uses and encounters, and allowing this sector of Carouge to live through its metabolic and inclusive vitality.



Arve, Plage à la fontenette, 1955

Le parc des sports / Sports Park

Le parc des sports permettra à la population de venir profiter d'un espace de verdure pour se détendre à l'ombre des arbres, au soleil sur la pelouse ou sur des gradins au bord de l'Arve. La population pourra y pratiquer de nombreuses activités sportives en libre-service tout en profitant d'un nouvel accès à l'eau.

In the Sports Park, the population will come and enjoy a green space to relax in the shade of the trees, in the sun, on the lawns, or on the terraces of the banks of the Arve. The population will be able to practice numerous freely accessible sports activities while enjoying new access to the water.

Fontenette-plage / Fontenette Beach

Grâce à un élargissement de la ripisylve sur certaines zones actuellement dédiées au football et à la piscine de Carouge, Fontenette-Plage possède une grande promenade dans la ripisylve ponctuée de plages de galet maintenu à l'aide d'épis, de lieux de rencontre et de détente. De nouvelles activités seront également proposées dans un petit pavillon multi-usages.

Thanks to an enlargement of the riparian zone in certain areas currently dedicated to football and to the Carouge swimming pool, Fontenette Beach offers a long walk through the riparian forest punctuated by meeting places, relaxation areas, and pebble beaches held in place by groynes. New activities will also be proposed in a small multi-purpose pavilion.

Parc des Orpailleurs / Parc of Orpailleurs

Ce grand parc est caractérisé par une pelouse, un bras d'eau de l'Arve et une île couverte de ripisylve. Le nouveau bras de l'Arve accueillera ses eaux lors des crues de plus en plus fréquentes en été. La population pourra profiter d'un nouveau lieu de fraîcheur pour se reposer sur la rive, observer la nature, jouer dans l'eau, tremper ses pieds ou même se baigner en toute sécurité. Ce nouvel espace rappellera les bords de l'Arve qui étaient très populaires à une époque où ses eaux vivifiantes étaient préférées à celles du lac, permettant ainsi de renouer avec les activités historiques de la rivière.

The large Gold Panners' Park is characterised by a lawn, a branch of the Arve and an island covered with riparian vegetation. The new branch of the Arve will accommodate its waters during the increasingly frequent summer floods. The population will be able to take advantage of a new place of freshness to rest on a portion, observe nature, play in the water, dip their feet, and even swim in complete safety. This new space will be reminiscent of the Arve banks, which were very popular when its invigorating waters were preferred to those of the lake, thus reconnecting with the river's historical activities.

La Place des Artisanes / Artisan Square

La Place des Artisanes est entourée des deux bâtiments conservés et surélevés du bureau des autos ainsi que d'un nouveau bâtiment localisé de l'autre côté de la route de Vevay afin d'en faire un seul et unique quartier. Elle proposera un nouveau lieu de vie et de rencontre. Accompagnée d'un écran végétal sur son pourtour et de jeux d'eau, la place accueillera de nombreux événements comme le marché des artisanes. Une passerelle la reliera au nouveau bâtiment de l'autre côté de la route du Val-d'Arve avec des équipements publics et un parking.

Artisan Square is surrounded by the two preserved and elevated buildings of the driver and vehicle licensing authority, and a new building located on the other side of the Vevay Road, bringing these spaces together as a single neighbourhood. It will offer a new place to live and meet. Accompanied by water features and a vegetative screen around its perimeter, the square will host numerous events, such as the craftsmen and artisan market. A footbridge will link it to the new building on the other side of Val-d'Arve Road with public facilities and a car park.

Le quartier des Auréas et le vieux cimetière

Le quartier des Auréas sera en partie re-développé grâce à des programmes collectifs. De l'autre côté de la forêt urbaine, sur la moitié est de l'actuel cimetière, une proposition de quartier de logement pourra être réalisée ouvrant ainsi le quartier sur la butte de Pinchat.

The Aurea district and old cemetery area will be upgraded by animating the ground floors of buildings with collective initiatives. On the other side of the urban forest, on the eastern half of the current cemetery, a proposed housing area could be constructed, opening the area to the Pinchat hilltop.

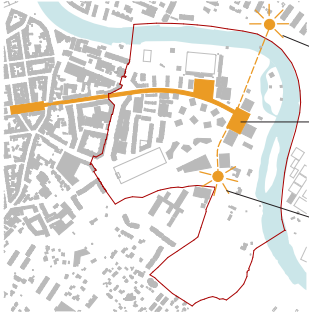
Le parc des Animaux

Le Parc des animaux permettra de maintenir et de mettre en valeur cet espace existant de découverte autour des animaux et des oiseaux de concours. Lieu familial par excellence, cet espace boisé sera rénové grâce à de nouveaux espaces de rencontre et une meilleure connexion avec le reste du quartier. Fontenette afin d'en faire un lieu remarquable et inspirant permettant de faire co-habiter l'humain et l'animal.

The Animal Park will make it possible to maintain and enhance this existing space of discovery around animals and show birds. An ideal family-friendly setting, this wooded area will be upgraded with new meeting spaces and a better connection to the rest of Fontenette sector, transforming it into a remarkable and inspiring place where humans and animals can cohabitate.



- Ripisylve**
Riparian area
- Continuité paysagère
Landscape continuity
 - Densification et reconnexion du cordon de verdure du bord de l'Arve
Densification and reconnection of the vegetation on the banks of the Arve
 - Nouveaux bâtiments et bâti transformé ou surélevé
New buildings and transformed or raised buildings



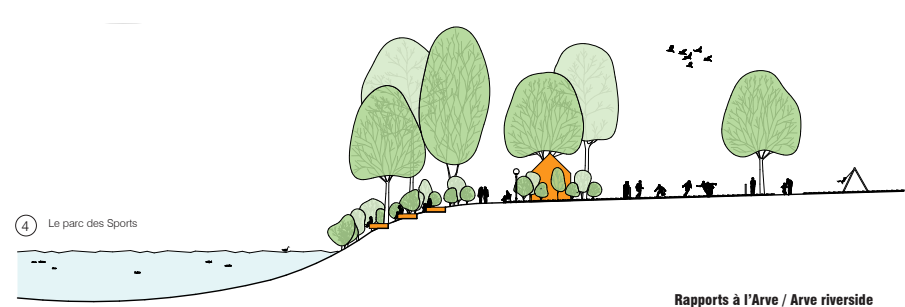
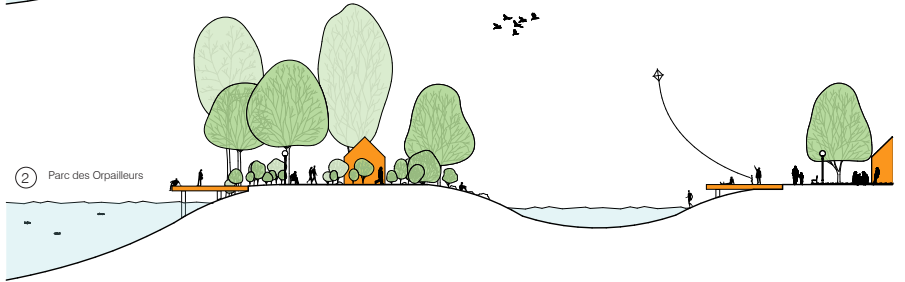
- Reconnexion**
Reconnection
- Connexion entre la Fontenette et Champel par un ascenseur.
Connection between la Fontenette and Champel with a lift.
- Connexion et séquençage des places publiques ; de la Place du Marché à la Place des Artisanes, en passant par la place de la Fontenette.
Connection and sequencing of public places; from Place du Marché to Place des Artisanes, via Place de la Fontenette.
- Connexion à mobilité douce depuis le pont du CEVA jusqu'à Pinchat.
Connection with a cycling path from CEVA bridge to Pinchat.



- Programmes**
Programs
- Cordon de programmes publics se développant sur les berges de l'Arve.
Layer of public programs evolving along the Arve.
 - Logement
Dwelling
 - Commerce / Artisanat
Merchant / Craftmanship
 - Loisir / Culture
Leisure / Culture
 - Education
Education



- Circulation**
Circulation
- Un tronçon de la Route de Veyrier est dédié uniquement à la mobilité douce et en amont est réduite à 30km/h et ne dessert que les parkings. Cela réduit fortement la circulation motorisée dans le secteur.
A section of the Route de Veyrier is dedicated only to soft mobility and reduced to 30 km/h and only serve the car parking. This reduces traffic pressure in the area.
- Circulation routière
Traffic
 - Riverain / Zone 30
Residents / 30km/h speed limit
 - BHNS uniquement
Only BHNS
 - Mobilité douce
Non motorized mobility



Rapports à l'Arve / Arve riverside

La ripisylve et les différents rapports à l'Arve / Riparian area and Arve riverside





Place des artisans / Artisans Square



Promenade au bord de l'Arve / Path along the Arve

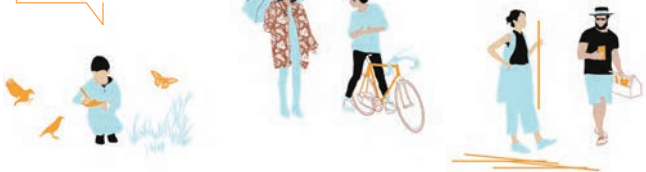
"J'aime beaucoup venir ici les mercredis après-midi pour mon cours sur la biodiversité. On parle des plantes et des arbres et parfois on peut même voir des grenouilles et des oiseaux".

"C'est vraiment un plaisir de venir travailler dans ce quartier. On est proche de la nature et c'est facile de venir à vélo".

"Grâce au marché sur la place des Artisans je peux faire découvrir mes œuvres à tout le monde. C'est vraiment agréable de se sentir au cœur de ce quartier."

"Thanks to the market on Artisans Square I can show my work to everyone. It's nice to feel like you're at the heart of this neighbourhood."

"I like coming here on Wednesday afternoons for my biodiversity class. We talk about plants and trees and sometimes you can even see frogs and birds".



B Quartier des artisans Artisans district

- place
- atelier mobile
- nœud de circulation
- arbres solitaire
- fontaine
- événements
- skateboard
- restaurants
- discothèque
- épicerie
- buvette
- marché artisanal

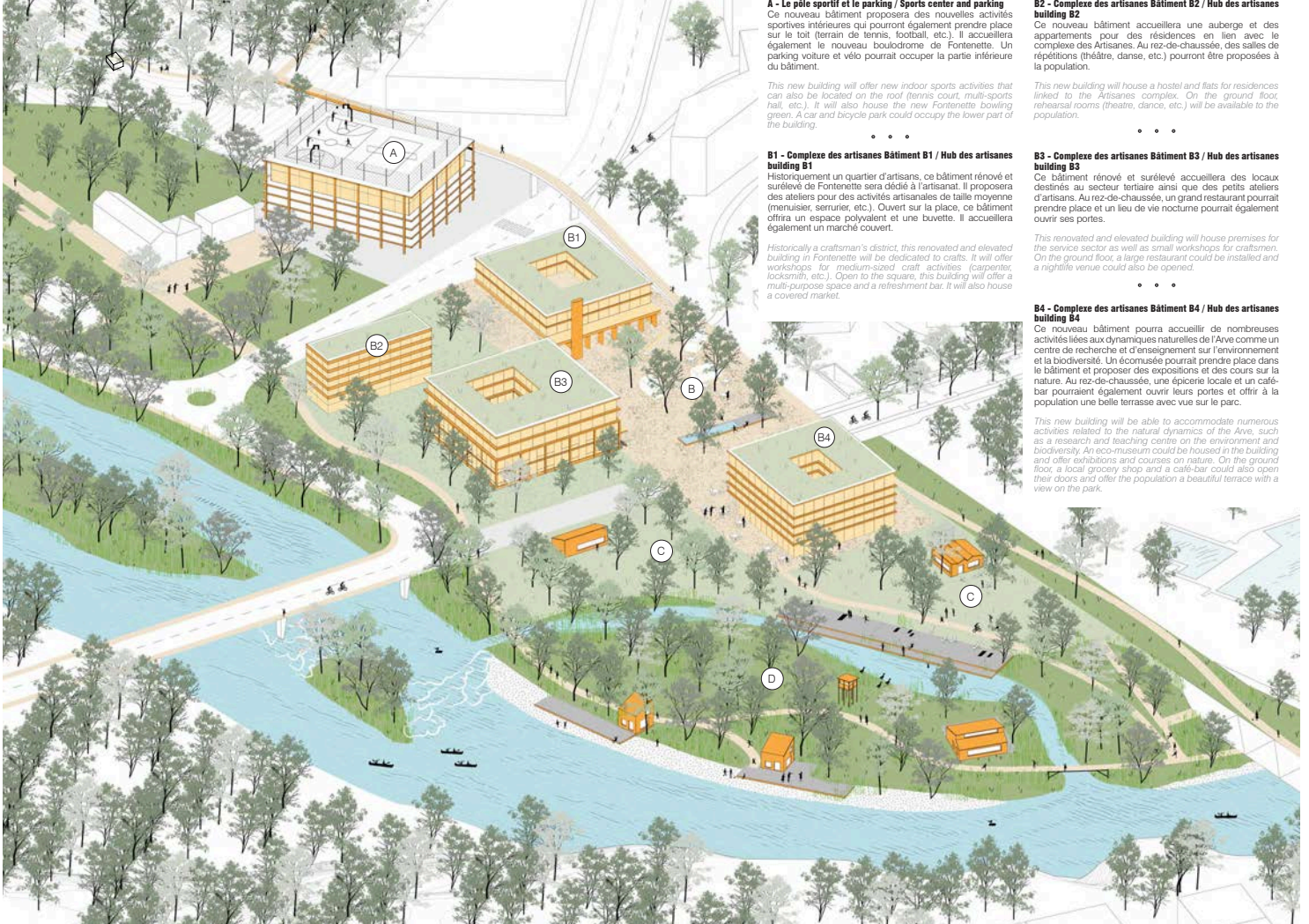
C Parc des orpailleurs Gold panners park

- solarium
- café/bars
- pavillons
- formations
- recherche
- nage
- pelouse
- arbres solitaire
- cinéArve
- jeux
- activités
- barbecue

D L'île des orpailleurs Gold panners island

- observatoire
- sensibilisation
- baignade
- kayak
- pontons
- sauna
- pêche
- ripsylvie
- forêt
- jeux en forêt
- refuge faune
- milieu flore

La place des artisans et le parc des orpailleurs / Artisans square and gold panners park



A - Le pôle sportif et le parking / Sports center and parking
Ce nouveau bâtiment proposera des nouvelles activités sportives intérieures qui pourront également prendre place sur le toit (terrain de tennis, football, etc.). Il accueillera également le nouveau boudirome de Fontenette. Un parking voiture et vélo pourrait occuper la partie inférieure du bâtiment.

This new building will offer new indoor sports activities that can also be located on the roof (tennis court, multi-sports hall, etc.). It will also house the new Fontenette bowling green. A car and bicycle park could occupy the lower part of the building.

B1 - Complexe des artisans Bâtiment B1 / Hub des artisans building B1
Historiquement un quartier d'artisans, ce bâtiment rénové et surélevé de Fontenette sera dédié à l'artisanat. Il proposera des ateliers pour des activités artisanales de taille moyenne (menuisier, serrurier, etc.). Ouvert sur la place, ce bâtiment offrira un espace polyvalent et une buvette. Il accueillera également un marché couvert.

Historically a craftsman's district, this renovated and elevated building in Fontenette will be dedicated to crafts. It will offer workshops for medium-sized craft activities (carpenter, locksmith, etc.). Open to the square, this building will offer a multi-purpose space and a refreshment bar. It will also house a covered market.

B2 - Complexe des artisans Bâtiment B2 / Hub des artisans building B2
Ce nouveau bâtiment accueillera une auberge et des appartements pour des résidences en lien avec le complexe des Artisans. Au rez-de-chaussée, des salles de répétitions (théâtre, danse, etc.) pourront être proposées à la population.

This new building will house a hostel and flats for residences linked to the Artisans complex. On the ground floor, rehearsal rooms (theatre, dance, etc.) will be available to the population.

B3 - Complexe des artisans Bâtiment B3 / Hub des artisans building B3
Ce bâtiment rénové et surélevé accueillera des locaux destinés au secteur tertiaire ainsi que des petits ateliers d'artisans. Au rez-de-chaussée, un grand restaurant pourrait prendre place et un lieu de vie nocturne pourrait également ouvrir ses portes.

This renovated and elevated building will house premises for the service sector as well as small workshops for craftsmen. On the ground floor, a large restaurant could be installed and a nightlife venue could also be opened.

B4 - Complexe des artisans Bâtiment B4 / Hub des artisans building B4
Ce nouveau bâtiment pourra accueillir de nombreuses activités liées aux dynamiques naturelles de l'Arve comme un centre de recherche et d'enseignement sur l'environnement et la biodiversité. Un écomusée pourrait prendre place dans le bâtiment et proposer des expositions et des cours sur la nature. Au rez-de-chaussée, une épicerie locale et un café-bar pourraient également ouvrir leurs portes et offrir à la population une belle terrasse avec vue sur le parc.

This new building will be able to accommodate numerous activities related to the natural dynamics of the Arve, such as a research and teaching centre on the environment and biodiversity. An eco-museum could be housed in the building and offer exhibitions and courses on nature. On the ground floor, a local grocery shop and a café-bar could also open their doors and offer the population a beautiful terrace with a view on the park.



The Arve's valley, an anthropologized landscape

It is close to this grey wire that the historical city of Carouge was first built. The river itself might seem a stripe of natural space in the city, now that long sides of its banks are urbanized, but even its path has been shaped to make out of meanders buildable lands. Until now, the water table expands from Eaux-Vives down to Chancy creating an invisible landscape of the Arve way beyond its banks.

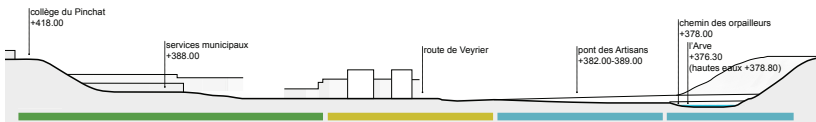
The Arve is a strong landscape element with changing qualities throughout time and space. The project attaches importance to give a continuous access to the river with activities and new opportunities of experiencing the river banks.



An unstructured neighborhood, but well equipped

Fontenette has been the result of the urban expansion of Carouge. Whereas the historical city is dense and formed by strong axes, after the rue de la Fontenette, the urbanization crumbles in incoherent pieces. The axes of transport rely mainly on the use of the car whereas pedestrian paths are poorly connected. The Rue de Veyrier, which is so vibrant and lively, transforms into the Route de Veyrier after crossing the rue de la Fontenette.

The project is to extend this street with its urban qualities, and spaces until the east end of the neighborhood. And to create local centralities and denser areas, in terms of built structures but also to foster neighborhood's life by implementing new activities. The secondary net of pedestrian routes and streets is also at the core of the planning.

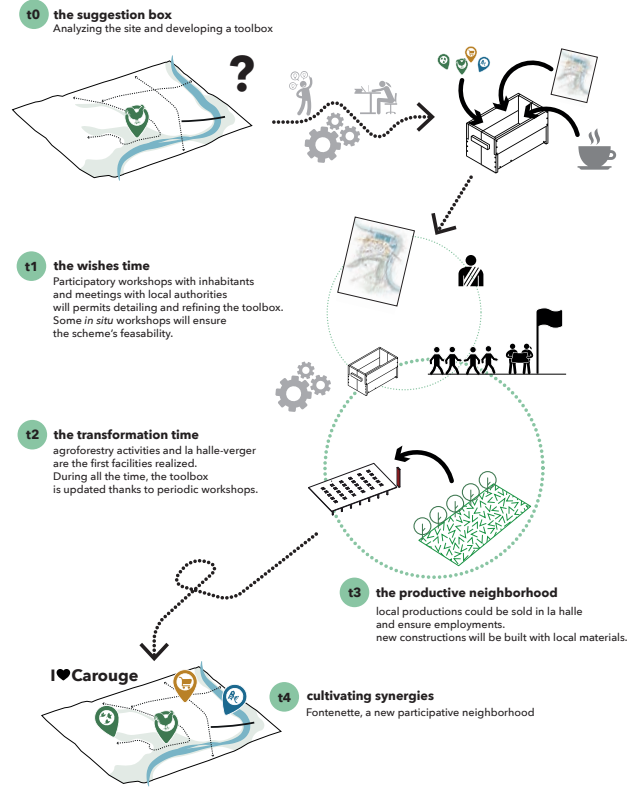


Arve's Valley section across Fontenette district - 1:12500



A dichotomy of woods and fields

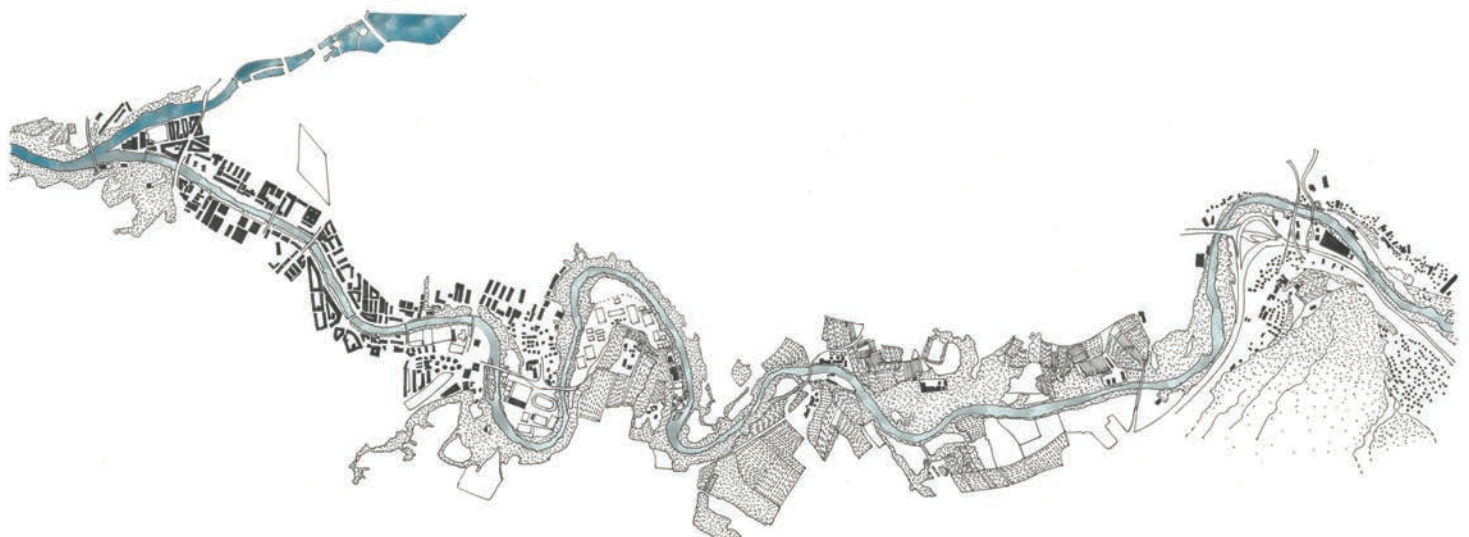
The Canton's territory is a complex patchwork of urban spaces, agriculture, woods and water. Regrettably, the lack of connection and interaction of these spaces create a scattered pattern. The project tries to weave these land stripes in order to create a fertile space for biodiversity and to improve the quality and the landscape's experience. Agroforestry, connection of the woods' hiking paths, educational features are part of the tools suggested to integrate the potential dynamics in a coherent scheme.



Implementing la Fontenette together, the real project

The proposal is not supposed to represent the final scheme of the new urban development. It is rather a process in which we propose a diagnosis of the site and a conceptual scheme that connects diverse potentialities of the site. In addition to this scheme, a toolbox, composed of diverse actions that could be implemented in the site, creates a basis for discussion in the frame of a collaborative project.

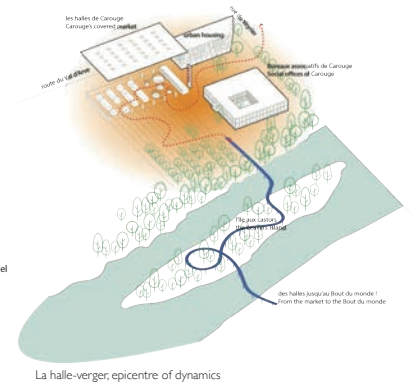
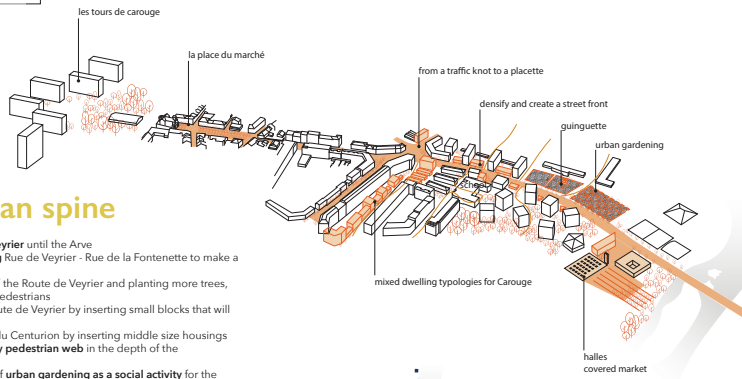
Our toolbox puts in perspective urban, social and environmental thematic, echoing the inhabitants expectations and actual challenges. The project lies in the process of boosting collective intelligence. Series of meetings, workshops, experiments with the inhabitants will foster the participation and the arising of new dynamics and interventions on the landscape of la Fontenette.



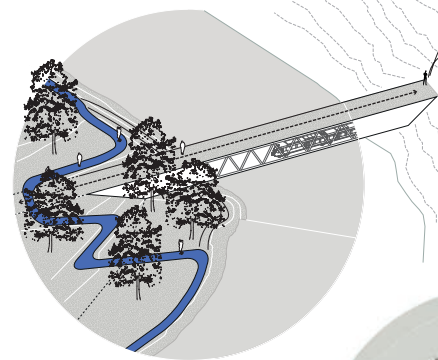
The Arve, flowing through fields and city

The urban spine

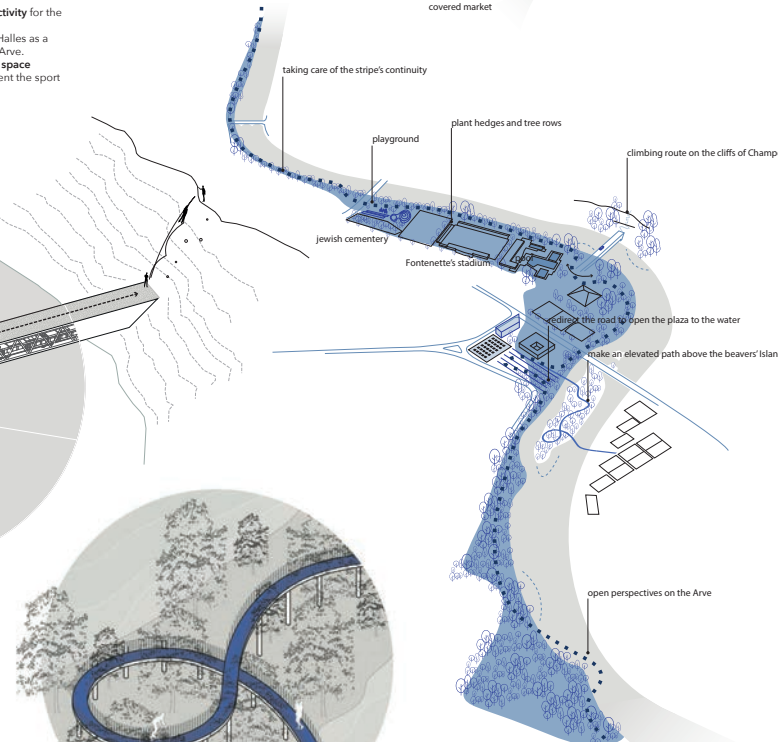
- **Extend the Rue de Veyrier** until the Arve
- **Redefine the crossing** Rue de Veyrier - Rue de la Fontenette to make a public space of it
- **Change the profile** of the Route de Veyrier and planting more trees, giving more space to pedestrians
- **Densify** along the Route de Veyrier by inserting small blocks that will create a street front
- **Densify** the Chemin du Centurion by inserting middle size housings
- **Extend the secondary pedestrian web** in the depth of the neighborhood
- Offer the possibility of **urban gardening** as a social activity for the inhabitants of the neighborhood
- **Transform** the Services Cantonal des Véhicules in the Halles in a covered market, and create a plaza that runs up to the Arve.
- Use the SCV office building as an **association's social space**
- **Bring public and indoor cultural activities** to implement the sport facilities of la Fontenette



La Halle-verger, epicentre of dynamics



Le pont des Artisans, from limit to link



Contemplative route over the île aux Castors

The Arve's flow

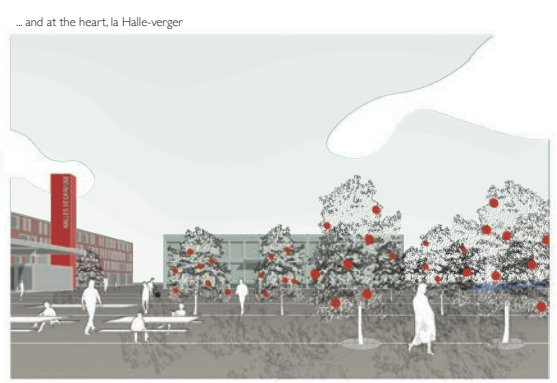
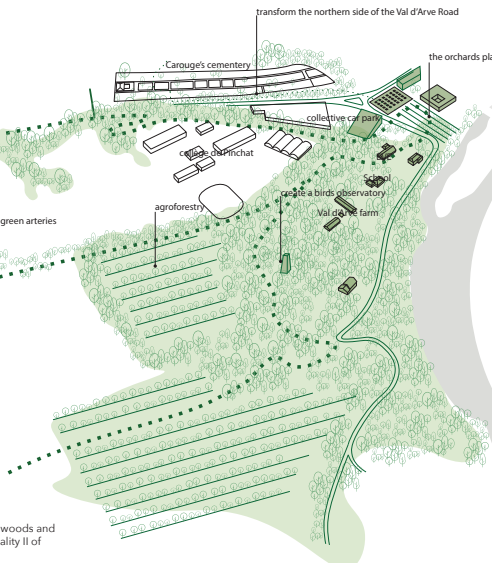
- **Bring continuity** in the pedestrian paths along the Arve
- **Connect the existing sports activities** and structure them
- **Plant hedges and tree rows** to **expand ecological continuities**
- Retrace the Route de Veyrier at its connection with the Pont du Val d'Arve to **create a new central plaza open to the water.**
- **Create a hill** on Pont des Artisans to soften the rupture
- **Place a climbing route** on the cliffs of Champel
- **Build an elevated path** over the Beavers' Island (île aux castors) to connect to the Bout du monde for pedestrian and cyclists. And make an observation point of the nature of the island without damaging it
- **Restore the natural flow** of the river
- **Insert public playgrounds** for children
- **Create some cantilevering of the paths** to experience the Arve in diverse ways
- Use the path as an **outdoor exhibition route** to feature young artists' work



The agroforestry, an ecological opportunity for the territory

The Green net

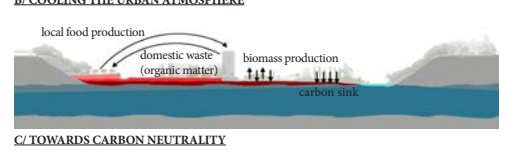
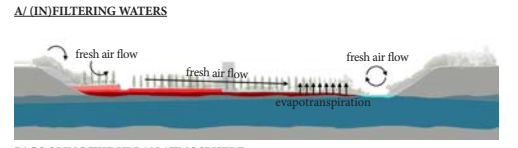
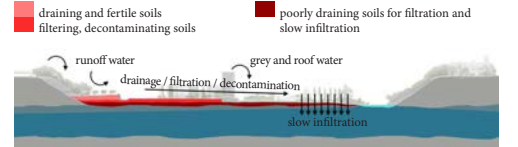
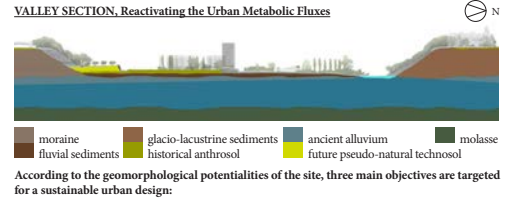
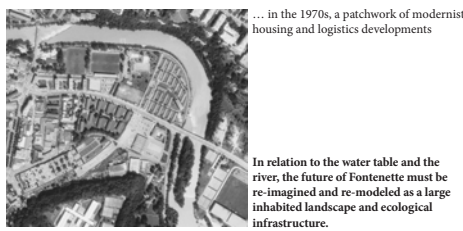
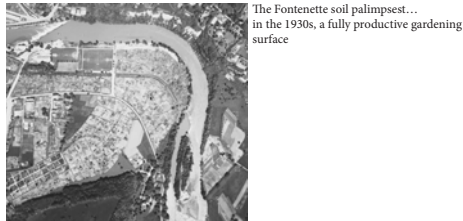
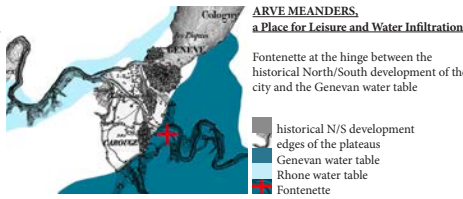
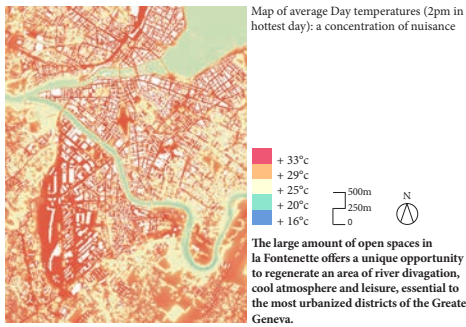
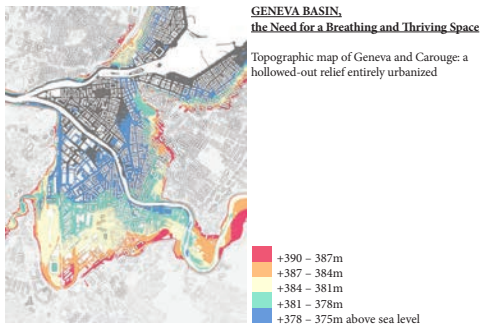
- **Reinforce the green arteries**
- **Propose the use of agroforestry** to soften the rupture of woods and fields and enrich the biodiversity. All agriculture being Quality II of biodiversity
- **Create landscape and educational routes** for the pedestrians
- **Create an orchard plaza** in front of the new Halles
- **Place hives in the forest** as honey production, educational feature and biodiversity motor
- **Place a bird's observatory** in the forest
- **Greenify** the side of the Route du Val d'Arve next to the Cemetery and place light squirrel bridges above the roads
- **Install an half buried collective car park** to host the vehicles of inhabitants and users of the Halles
- **Connect** the woods' paths to the rivers routes.



... and at the heart, la Halle-verger

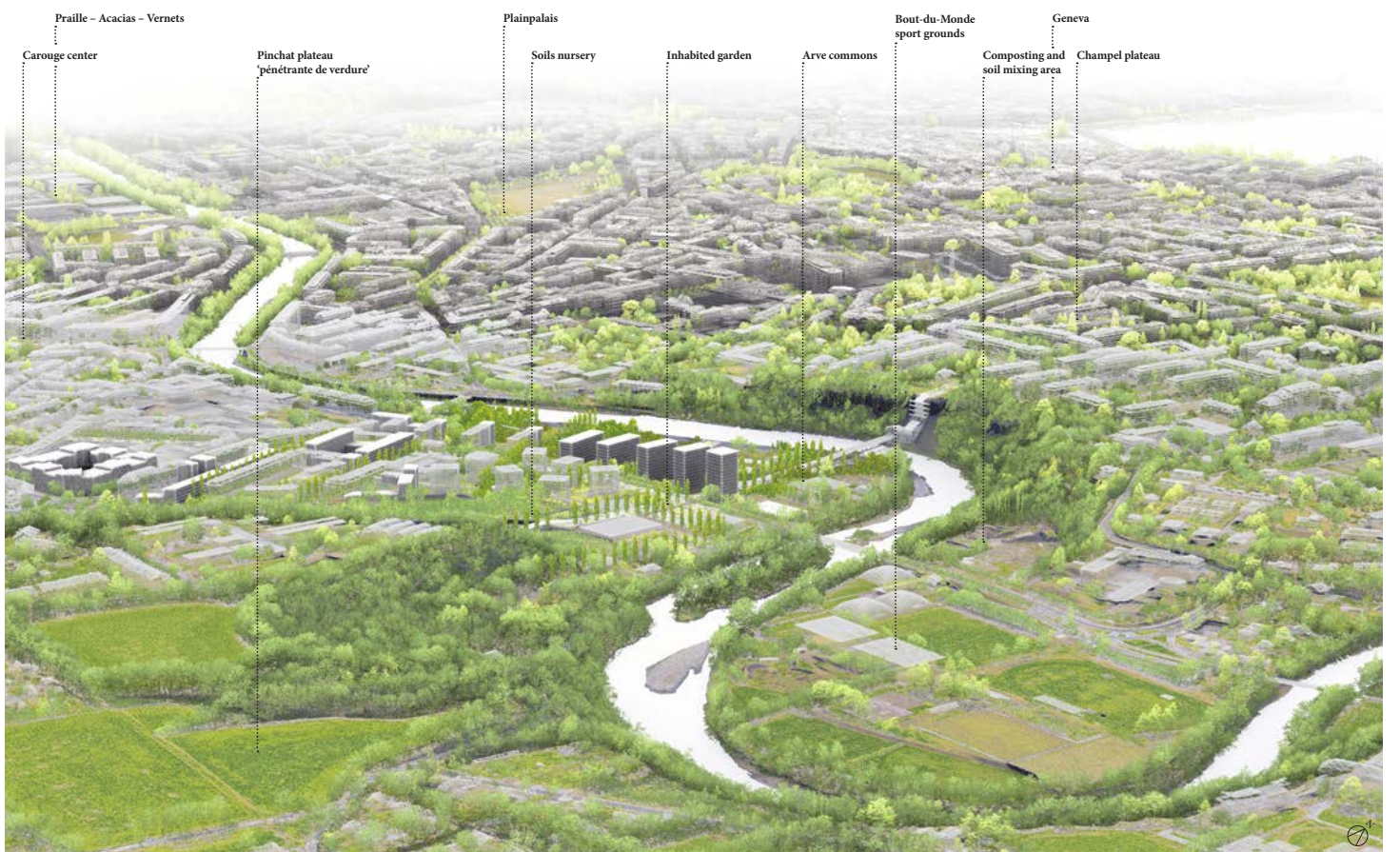
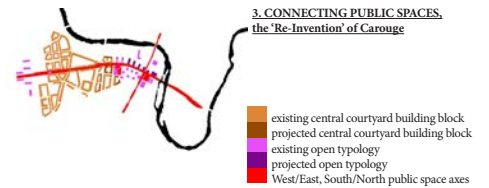
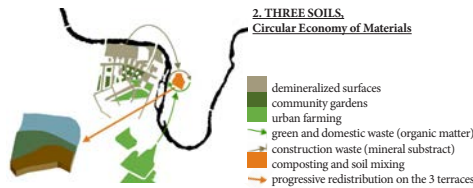
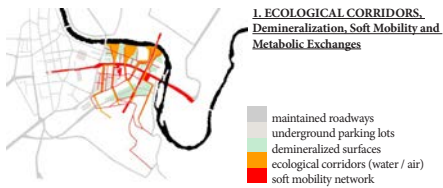
REGENERATING CAROUGE GROUNDS: A CONNECTING URBAN ECOSYSTEM

CAROUGE FONTENETTE AS AN INHABITED LANDSCAPE IN THE GREATER GENEVA URBAN ECOSYSTEM



3 MAIN STRATEGIES AND MORPHOLOGIES FOR A CONNECTING ECOLOGICAL INFRASTRUCTURE

Throughout the 21st century, the Fontenette urban landscape will be gradually transformed into a connecting ecological infrastructure according to three main strategies and related morphologies:



REMODELING THE TOPOGRAPHY, MATERIALITY, ECOLOGICAL FUNCTIONS AND SOCIAL USES OF THE FONTENETTE GROUNDS

Cutting and filling of the existing terrain



SOILS NURSERY
Historically dedicated to logistical functions, the higher part of the site is meant to meet future challenges of urban ecology: the creation of new soils, in particular for urban agriculture. The anthropic soils of the cemetery are gradually extended by a series of orchards terraces forming an ephemeral and evolving topography.

INHABITED GARDEN
The reopening of asphalt surfaces allows for the implementation of two functional and landscape devices on the inhabited garden terrace: vegetated ditches bordered by a soft mobility network, and a grid of semi-public spaces including individual vegetable gardens, community gardens and small meeting places.

ARVE COMMONS
Terrain excavations progressively shape an alternating sequence of transversal commons: lower, wild and cool wetlands expanding toward the Arve banks, and higher, drier and less densely vegetated grasslands favoring multiple informal leisure uses.

Axonometric model of the projected topography, with water runoff simulation
The systematic demineralization, reopening and regeneration of mineral surfaces generates a new topography shaped by three soil levels (terraces) and a series of ecological corridors ensuring transversal metabolic exchanges throughout the site.

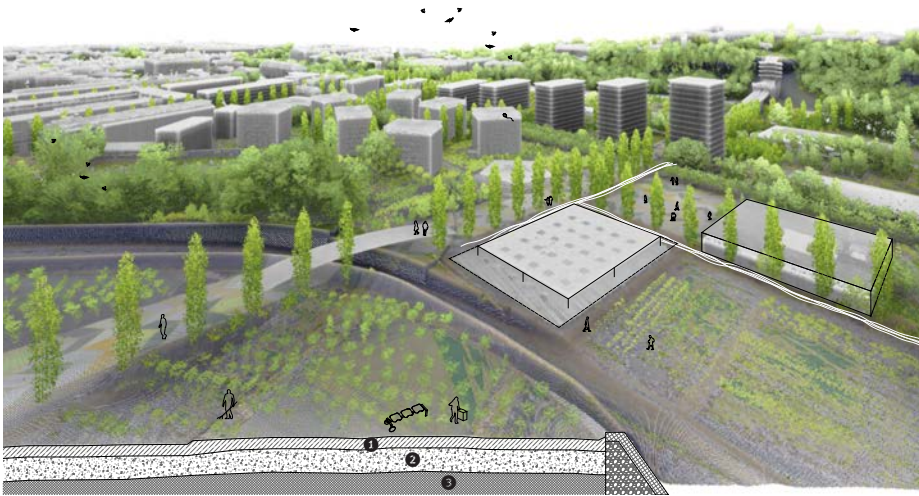
- Soils nursery**
1. Pinchat secondary school
 2. Urban farm (poultry breeding)
 3. Urban Farm
 4. Urban orchards in permaculture
 5. Trails of the plateaus
 6. Carouge Cemetery
 7. Footbridge
 8. Maintained roadway

- Inhabited garden**
1. Mixed-use service building (catering, leisure, etc.)
 2. New Market
 3. Fontenette esplanade
 4. School of music
 5. Community gardens within building block courtyard
 6. Community gardens framing open building compositions
 7. Val d'Arve School
 8. Ecological corridor (ditches)
 9. Carouge pedestrian mall

- Arve commons**
1. Bouldrome
 2. Outdoor workout
 3. Bains and Buvette de la Fontenette
 4. Grasslands
 5. Wetlands
 6. Footbridge
 7. Jewish Cemetery
 8. Leman Express bridge

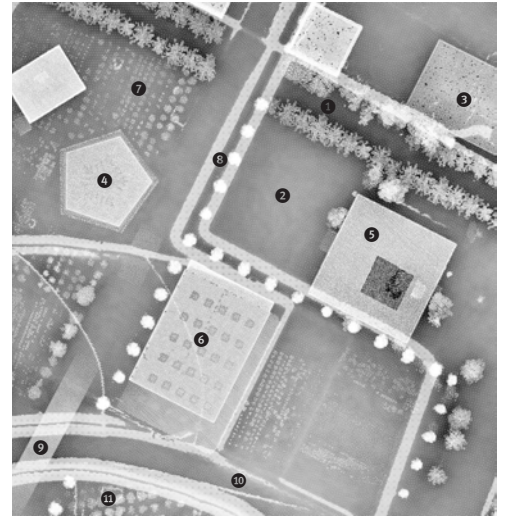


REOPENING SOCIO-ECOLOGICAL URBAN LANDSCAPES: CONNECTING SPACES AND LIVING BEINGS

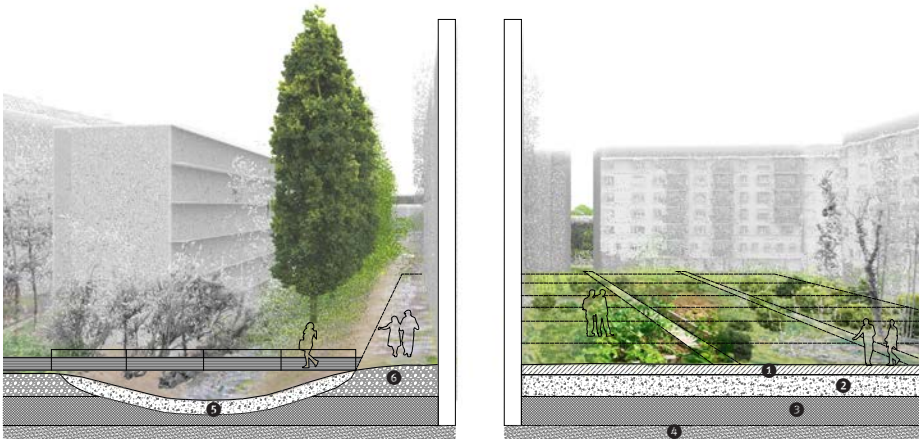


THE NEW FONTENETTE MARKET AND ESPLANADE, ORCHARD TERRACES: On the orchard terraces, one take a walk under fruit trees associated with low plantations in permaculture. Below, the permeable esplanade offers a large space for various events. The market and urban farm symbolize the evolving neighborhood's identity: soils become fertile again and produce food for the local population. By stages, the circular and gradual process of the soil nursery helps to mask the route du Val-d'Arve.

SOIL HORIZONS: 1. Living Growth horizon (rich in organic matter, rapid water drainage); 2. Transitional horizon (moderate water drainage for decontamination); 3. Filtration horizon (slow water drainage)

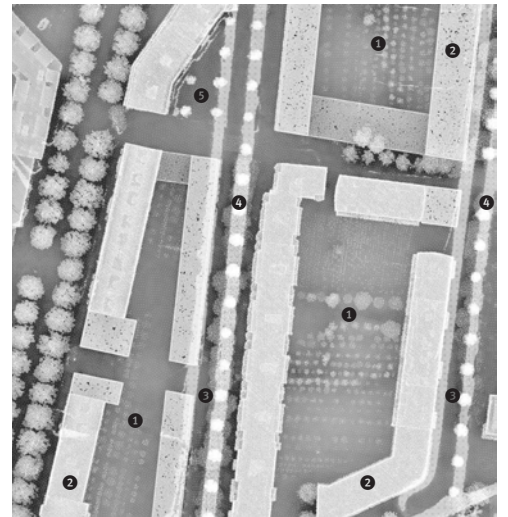


1. Carouge pedestrian mall; 2. Fontenette esplanade; 3. Mixed-use service building; 4. School of music; 5. New Market; 6. Urban Farm; 7. Community gardens; 8. Ecological corridor (ditch and poplar line); 9. Trails of the plateaus; 10. Maintained roadway; 11. Urban orchards in permaculture

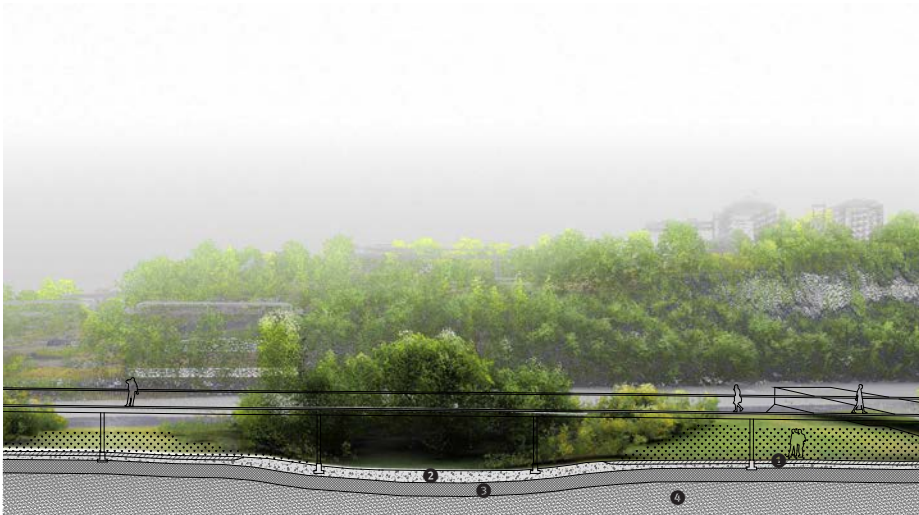


ECOLOGICAL CORRIDORS AND COMMUNITY GARDENS: The ground floor of the inhabited gardens of La Fontenette is covered by a carpet of vegetable gardens pervading into the courtyards which are appropriated by the inhabitants. Along the ecological corridor, a network of soft mobility crosses the neighborhood. Channeled by poplar lines, fresh air offers the most vulnerable populations good conditions to move around actively. Water is drained and purified by the scrubby vegetation that grows in the ditches.

SOIL HORIZONS: 1. Living Growth horizon (rich in organic matter, rapid water drainage); 2. Transitional horizon (moderate water drainage for decontamination); 3. Filtration horizon (slow water drainage); 4. Heterogeneous fills (gravel in a matrix of silty sand); 5. Draining horizon (ditch); 6. Mixture of soil and stone (mobility path)

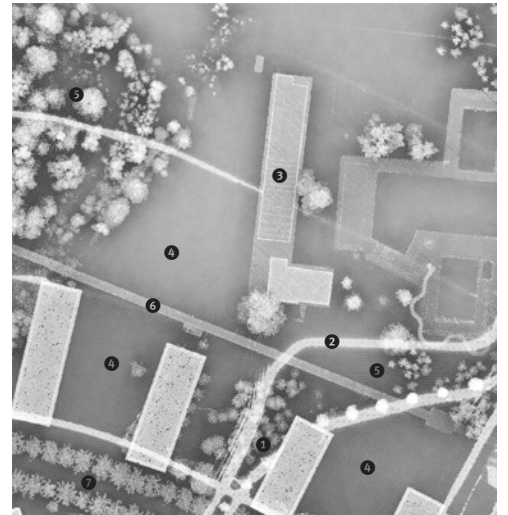


1. Community gardens; 2. Building block with courtyard; 3. Ecological corridor (ditch and poplar line); 4. Soft mobility network; 5. Meeting place



THE BAINS DE LA FONTENETTE, GRASSLANDS AND WETLANDS: In direct relation with the Arve shore, the Bains and Buvette de la Fontenette open onto a vast common. Permanent meadow offers a place for relaxation. Wetland hosts a high biodiversity, with a specific vegetation absorbing and regulating water. Both types of vegetation sequester a large amount of carbon. The air currents along the Arve and the evapotranspiration from the plants provide a refreshing atmosphere.

SOIL HORIZONS: 1. Top horizon (quite fast drainage of water, carbon storage); 2. Transitional horizon (moderate water drainage for decontamination); 3. Filtration horizon (slow water drainage); 4. Alluvium of the Arve terrace (gravelly phase, gravels to boulders, sandy-silty)



1. Ecological corridor (ditch and poplar line); 2. Soft mobility network; 3. Bains and Buvette de la Fontenette; 4. Grasslands; 5. Wetlands; 6. Footbridge; 7. Carouge pedestrian mall

